









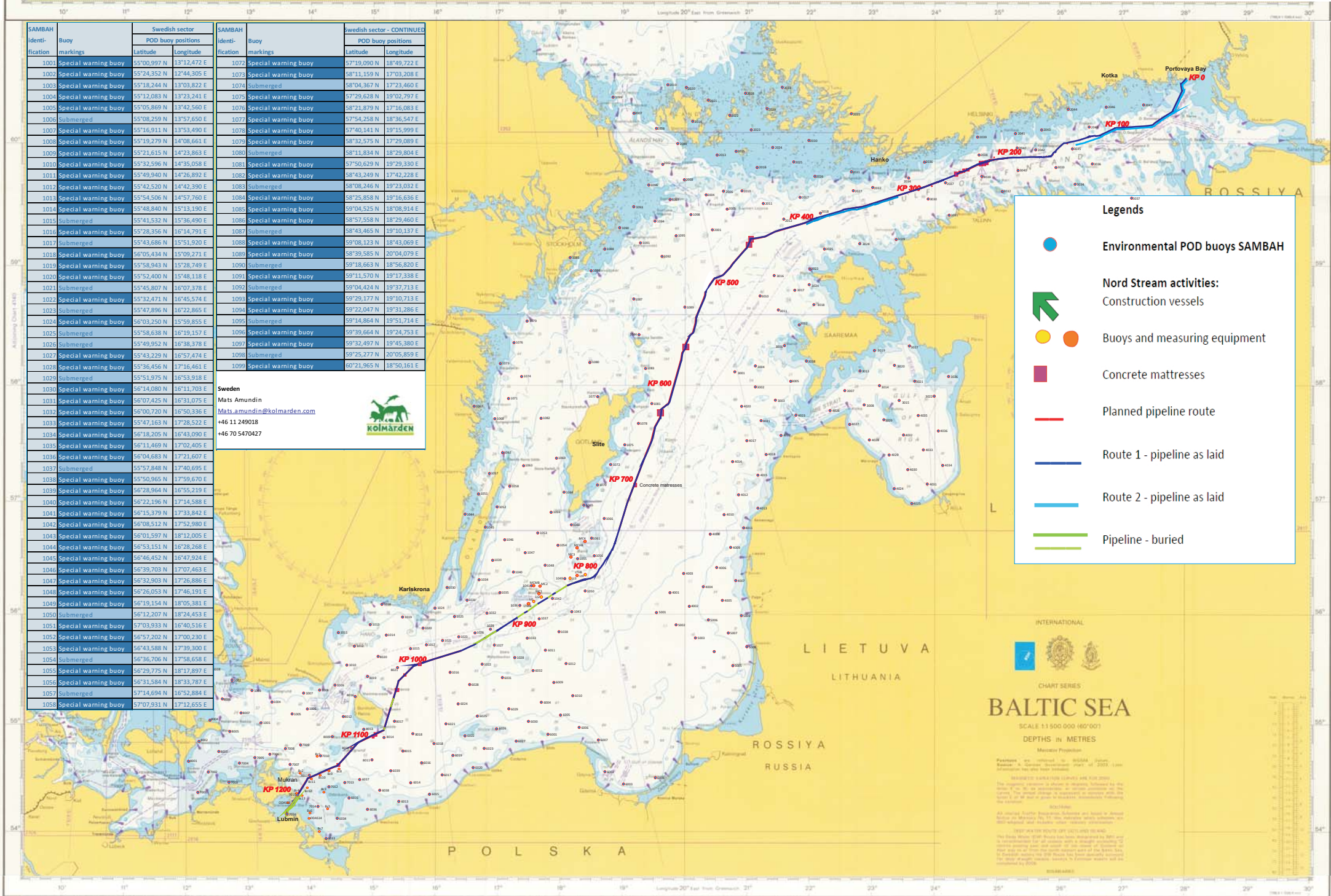
SAMBHA identification	Buoy markings	Swedish sector		SAMBHA identification	Buoy markings	Swedish sector - CONTINUED	
		POD buoy positions	POD buoy positions				
		Latitude	Longitude			Latitude	Longitude
1001	Special warning buoy	55°00,997 N	13°12,472 E	1072	Special warning buoy	57°19,090 N	18°49,722 E
1002	Special warning buoy	55°24,352 N	12°44,305 E	1072	Special warning buoy	58°11,159 N	17°03,208 E
1003	Special warning buoy	55°18,244 N	13°03,822 E	1074	Submerged	58°04,367 N	17°23,460 E
1004	Special warning buoy	55°12,083 N	13°23,241 E	1076	Special warning buoy	57°29,628 N	19°02,797 E
1005	Special warning buoy	55°05,869 N	13°42,560 E	1076	Special warning buoy	58°21,879 N	17°16,083 E
1006	Submerged	55°08,259 N	13°57,650 E	1077	Special warning buoy	57°54,258 N	18°36,547 E
1007	Special warning buoy	55°16,911 N	13°53,490 E	1078	Special warning buoy	57°40,141 N	19°15,999 E
1008	Special warning buoy	55°19,279 N	14°08,661 E	1078	Special warning buoy	58°32,575 N	17°29,089 E
1009	Special warning buoy	55°21,615 N	14°23,863 E	1080	Submerged	58°11,834 N	18°29,804 E
1010	Special warning buoy	55°32,596 N	14°35,058 E	1081	Special warning buoy	57°50,629 N	19°29,330 E
1011	Special warning buoy	55°49,940 N	14°26,892 E	1082	Special warning buoy	58°43,249 N	17°42,228 E
1012	Special warning buoy	55°42,520 N	14°42,390 E	1083	Submerged	58°08,246 N	19°23,032 E
1013	Special warning buoy	55°54,506 N	14°57,760 E	1084	Special warning buoy	58°29,858 N	19°16,636 E
1014	Special warning buoy	55°48,840 N	15°13,190 E	1085	Special warning buoy	58°04,525 N	18°08,914 E
1015	Submerged	55°41,532 N	15°36,490 E	1086	Special warning buoy	58°57,558 N	18°29,460 E
1016	Special warning buoy	55°28,356 N	16°14,791 E	1087	Submerged	58°43,465 N	19°10,137 E
1017	Submerged	55°43,686 N	15°51,920 E	1088	Special warning buoy	59°08,123 N	18°43,069 E
1018	Special warning buoy	56°05,434 N	15°09,271 E	1088	Special warning buoy	58°39,585 N	20°04,079 E
1019	Special warning buoy	55°58,943 N	15°28,749 E	1090	Submerged	59°18,663 N	18°56,820 E
1020	Special warning buoy	55°52,400 N	15°48,118 E	1091	Special warning buoy	59°11,570 N	19°17,338 E
1021	Submerged	55°45,807 N	16°07,378 E	1092	Submerged	59°04,424 N	19°37,713 E
1022	Special warning buoy	55°32,471 N	16°45,574 E	1092	Special warning buoy	59°29,177 N	19°10,713 E
1023	Submerged	55°47,896 N	16°22,865 E	1094	Special warning buoy	59°22,041 N	19°31,286 E
1024	Special warning buoy	56°03,250 N	15°59,855 E	1095	Submerged	59°14,864 N	19°51,714 E
1025	Submerged	55°58,638 N	16°19,157 E	1096	Special warning buoy	59°39,664 N	19°24,753 E
1026	Submerged	55°49,952 N	16°38,378 E	1097	Special warning buoy	59°32,497 N	19°45,380 E
1027	Special warning buoy	55°43,229 N	16°57,474 E	1098	Submerged	59°25,277 N	20°05,859 E
1028	Special warning buoy	55°36,456 N	17°16,461 E	1099	Special warning buoy	60°21,965 N	18°50,161 E
1029	Submerged	55°51,975 N	16°59,918 E				
1030	Special warning buoy	56°14,080 N	16°11,703 E				
1031	Special warning buoy	56°07,425 N	16°31,075 E				
1032	Special warning buoy	56°00,720 N	16°50,336 E				
1033	Special warning buoy	55°47,163 N	17°28,522 E				
1034	Special warning buoy	56°18,205 N	16°43,090 E				
1035	Special warning buoy	56°11,469 N	17°02,405 E				
1036	Special warning buoy	56°04,683 N	17°21,607 E				
1037	Submerged	55°57,848 N	17°40,695 E				
1038	Special warning buoy	55°50,965 N	17°59,670 E				
1039	Special warning buoy	56°28,964 N	16°55,219 E				
1040	Special warning buoy	56°22,196 N	17°14,588 E				
1041	Special warning buoy	56°15,379 N	17°33,842 E				
1042	Special warning buoy	56°08,512 N	17°52,980 E				
1043	Special warning buoy	56°01,597 N	18°12,005 E				
1044	Special warning buoy	56°53,151 N	16°28,768 E				
1045	Special warning buoy	56°46,452 N	16°47,924 E				
1046	Special warning buoy	56°39,703 N	17°07,463 E				
1047	Special warning buoy	56°32,903 N	17°26,886 E				
1048	Special warning buoy	56°26,053 N	17°46,191 E				
1049	Special warning buoy	56°19,154 N	18°05,381 E				
1050	Submerged	56°12,207 N	18°24,453 E				
1051	Special warning buoy	57°03,933 N	16°40,516 E				
1052	Special warning buoy	56°57,202 N	17°00,230 E				
1053	Special warning buoy	56°43,588 N	17°39,300 E				
1054	Submerged	56°36,706 N	17°58,658 E				
1055	Special warning buoy	56°29,775 N	18°17,897 E				
1056	Special warning buoy	56°31,584 N	18°33,787 E				
1057	Submerged	57°14,694 N	16°52,884 E				
1058	Special warning buoy	57°07,931 N	17°12,655 E				

Sweden  
Mats Amundin  
Mats.amundin@kolmarden.com  
+46 11 249018  
+46 70 5470427



### Legends

-  Environmental POD buoys SAMBAH
-  Nord Stream activities: Construction vessels
-  Buoys and measuring equipment
-  Concrete mattresses
-  Planned pipeline route
-  Route 1 - pipeline as laid
-  Route 2 - pipeline as laid
-  Pipeline - buried



INTERNATIONAL  
CHART SERIES  
**BALTIC SEA**  
SCALE 1:1 500 000 (40° 00')  
DEPTHS IN METRES  
Metric Projection



FOGA ApS has prepared the following newsletter on the basis of information provided by SAMBAH:

## HARBOUR PORPOISE MONITORING IN THE BALTIC SEA

### SAMBAH

SAMBAH is an international project involving all EU countries around the Baltic Sea, with the ultimate goal to secure the conservation of the Baltic Sea harbour porpoise.

### PURPOSE

The Baltic Sea subpopulation of harbour porpoises has been drastically reduced over the last decades, and the species is now critically endangered. Unfortunately, the threats and problems are still poorly understood. Hence, there is a pressing need for new knowledge and data to enable a successful preservation of the harbour porpoise in the Baltic Sea.

SAMBAH's main goals are to estimate density and abundance of harbour porpoises in the Baltic Sea, to produce distribution maps and to identify possible hotspots, habitat preferences and areas with a higher risk of conflict with human activities.

The study will help reveal the current size and geographical range of the Baltic Sea harbour porpoise population along with habitat preferences. This data is important for the designation of protected areas for the species in accordance with the ASCOBANS Recovery Plan for Baltic Harbour Porpoises.

### MONITORING STUDY

SAMBAH will study the Baltic Sea harbour porpoise by using Static Acoustic Monitoring (SAM) devices called C-PODs. The C-PODs detect and log porpoise sonar click activities inside a radius of about 100 m.

In total, approximately 300 C-PODs will be deployed between May 2011 and May 2013. The collected data of logged porpoise clicks will be used to calculate density and abundance, both in the whole study area and per involved country.

### AREA OF DEPLOYMENT

The C-PODs will be distributed in a study area that stretches from the Darss and Limhamn ridges in the southwest to the northern border of the Åland archipelago in the north, at depths between 5 and 80 m.

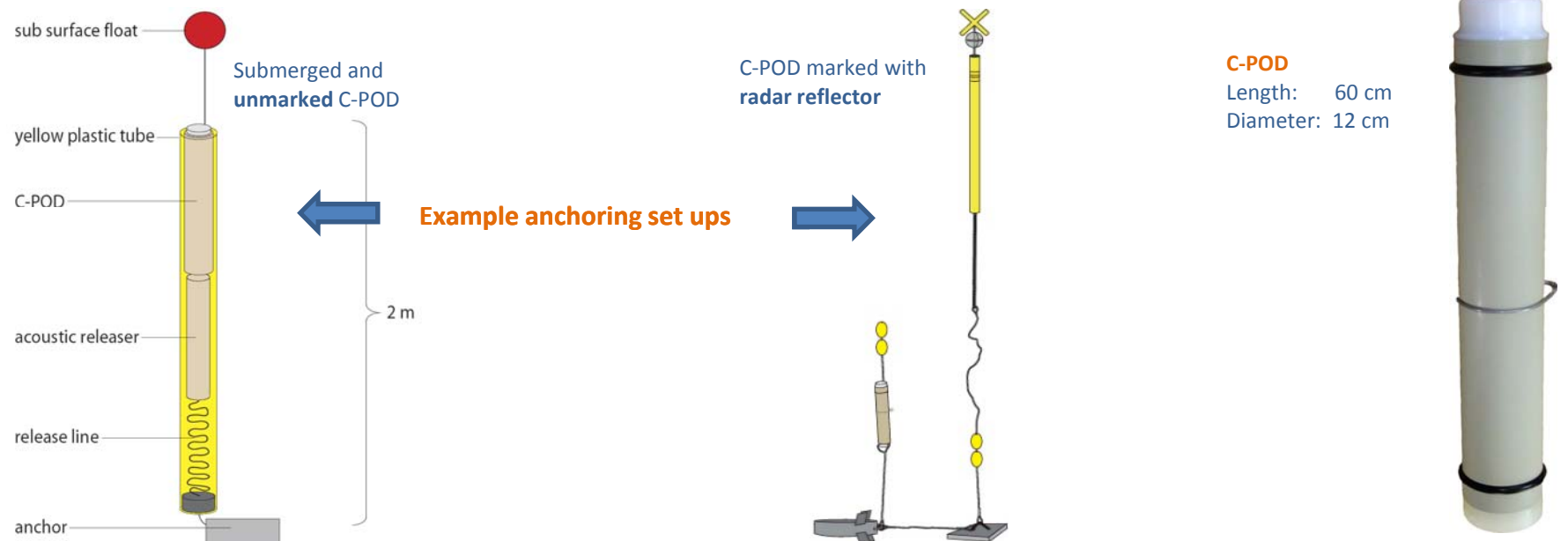
Most C-PODs are marked with radar reflectors and reflexes, while some are marked with light buoys and some are completely submerged and not marked at all.

The area includes waters of Sweden, Denmark, Germany, Poland, Lithuania, Latvia, Estonia and Finland. During the two year period, the C-PODs will be serviced every three to four months and data will be stored in a custom made database.

For exact C-POD positions, please see the enclosed list and the nautical chart.

Please note that the listed positions are target positions and that the actual position may vary slightly around this point. Please keep a safe distance around the given position.

### C-POD INFORMATION



C-POD in the Baltic Sea



Harbour porpoise in a calm sea

### COMPENSATION FOR RECOVERY OF LOST PODS

Recovery of lost C-PODs will be compensated with EUR 50,- per POD + postage expenses to a SAMBAH organization. Contact persons for each involved country is listed on the enclosed list with exact C-POD positions and the nautical chart.

Please avoid fishing or trawling close to the C-POD positions.

### CONTACT & LINKS

For contact information for each country affected by the study, please see the nautical chart. For more information please visit [www.sambah.org](http://www.sambah.org), where files listing the C-POD positions will be available in several formats.

This special newsletter has been prepared on request from SAMBAH and is distributed to all fishing vessels and interested parties around the Baltic Sea. Please also visit FOGA's website [www.foga.dk](http://www.foga.dk). Please email [fish.info@foga.dk](mailto:fish.info@foga.dk) to subscribe or unsubscribe to this newsletter.