

# LAURA

Survey Vessel



- Guard vessel
- Bottom sampling
- Trial fishery
- Video- and multibeam survey
- Sidescan sonar survey
- POD-handling
- Bird observation
- Accommodates up to 10 surveyors

# SPECIFICATIONS

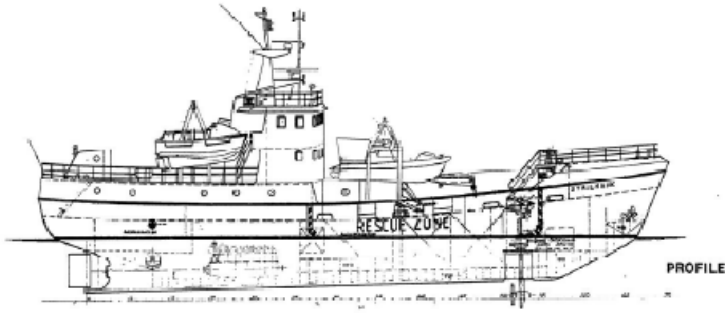
Flag:	Faroe Islands
Year built/rebuilt:	Brødrene Lothe A/S, Haugesund, Norway, 1959
Class:	1A1 ICE-C
Identification:	Call sign: OZ2055, IMO no: 8621408, DnV no: 05172, MMSI no: 231 394 000
GT:	344 t
NT:	103 t
DWT:	151 t
LOA:	41.86 meters
BR:	8.40 meters
Rescue Freeboard:	0.80 meters
Draft:	Max. 4 meters
Tank Capacity:	Fuel oil: 50.36 m <sup>3</sup> , fresh water: 74.20 m <sup>3</sup>
Main Engine:	1 x Wichmann Diesel 600 BHP 6ACA Azimuth thruster: Aquamaster UL 601/3500 with 1 x Caterpillar 650 BHP The thruster are also approved as propulsion machinery Stern thruster: 1 x Schottel 225 HP
Auxiliary Engines:	2 x Volvo Penta MD 100 BK w/Stamford MC 40 B each 100 KW, 250 V, 50HZ and 40 KW, 380 V, 50 HZ
Speed:	Max. 12 knots
Cranes:	1 x hydraulic crane, Tico, 3 t 1 x hydraulic crane, 400 kilos
Navigation Equipment:	JRC JMA-5225 ARPA 1 x radar Furuno 3 cm ARPA JRC JLR-20 Satellite Compass 1 x autopilot Robertson 1 x satellite navigator GPS 1 x Gyro compass
Communication Equipment:	1 x Furuno GMDSS A1, A2 1 x VHF Sailor RT 144 & 1 x VHF Sailor RT 2048 3 x VHF portable 1 x helicopter communication equipment 1 x helicopter beacon 1 x radar transponder 1 x Navtex 1 x mobile telephone GSM, 1 x satellite phone Iridium & internal intercom
Other equipment:	1 x 10 ft container on deck with office space for surveyors
Rescue equipment:	1 x FRC Mob.boat
Firefighting:	Fi-Fi I: 1 x pump 150 m <sup>3</sup> /hour, 1 x monitor, throw length 30 meters
Accommodation:	Capacity for up to 10 surveyors



FOGA ApS  
FISKERNES  
ORIENTERING  
OM OLIE- OG  
GASAKTIVITETER

Trafikhavnskej 19  
DK-6700 Esbjerg

Tel. +45 75 451144  
Fax +45 75 451176  
Mobil +45 2161 4512  
E-mail: [fish.info@foga.dk](mailto:fish.info@foga.dk)  
Web: [www.foga.dk](http://www.foga.dk)



PROFILE



ROOF DECK

BRIDGE DECK



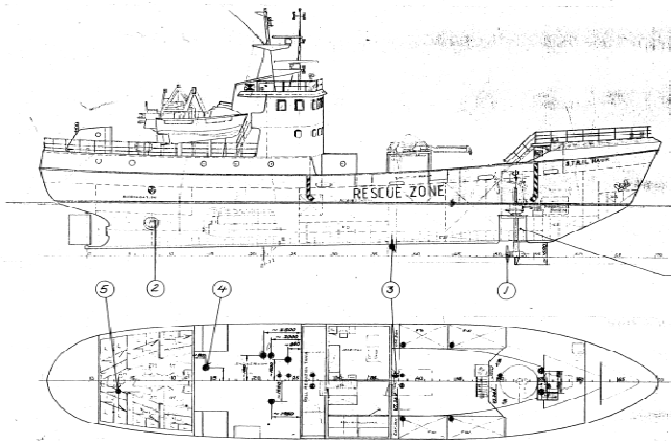
MAIN DECK



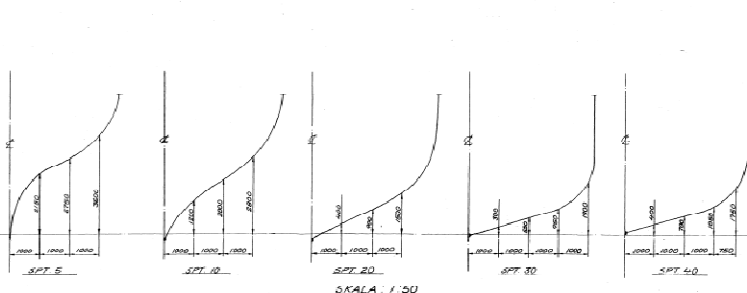
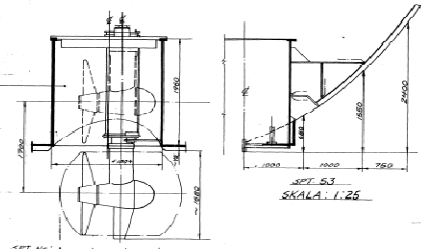
BELOW MAIN DECK

PRINCIPAL PARTICULARS  
 LENGTH OVER ALL 41.80 m  
 LENGTH BETWEEN PERP 36.80 m  
 BREADTH OVER ALL 8.10 m  
 BREADTH BETWEEN PERP 7.80 m  
 DEPTH HOLD OVER ALL 3.80 m  
 DEPTH HOLD BETWEEN PERP 3.50 m

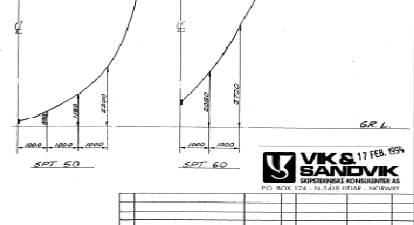
DESIGNER	GENERALARRANGEM.	
NAME	"SIRIL MÅK"	
NO.	560963	1:100



No	Generetall	Plussering	Ant	Symbol
1	Flussende Apparat	Flussende Apparat	1	⊙
2	Schleppseil (1) Schachtel	Schleppseil (1) Schachtel	1	⊙
3	Baumontage Ekkelstift	Kol. Davit. Metall. Sekt. 27.28.28	1	⊙
4	Reparaturstift	Metallstift	1	⊙
5	Reparaturstift	Metallstift	1	⊙



SKALA: 1:50



VKS & SANDVİK  
 17 FEB. 1959  
 SANDVİKS KONGRESSEN 12  
 P.O. BOX 174, N-1619 BERG, NORWAY

NO	DESCRIPTION	REMARKS	POS	DETAILED	NATIONAL	DEPT
1	Decking Plan					
2	"SIRIL MÅK"					

A.M. LIAEN & ASSOCIATES  
 1446-544-HZ 17