



FOGA ApS
FISHERMENS
INFORMATION
ON OFFSHORE
ACTIVITIES

Trafikhavnsvej 19
DK-6700 Esbjerg
Tel.: +45 75 45 11 44

E-Mail: fish.info@foga.dk
Web page: www.foga.dk

BALTIC SEA ACTIVITIES

Week 37
September 15, 2022

FOGA ApS has on basis of information received from offshore operators in the Baltic Sea prepared the following newsletter describing present activities:





FOGA ApS
FISHERMENS
INFORMATION
ON OFFSHORE
ACTIVITIES

FOGA ApS has on basis of information received from offshore operators at the Baltic Sea prepared the following newsletter describing present activities:

Trafikhavnskaj 19
DK-6700 Esbjerg
Tel.: +45 75 45 11 44

E-Mail: fish.info@foga.dk
Web page: www.foga.dk

BALTIC SEA ACTIVITIES

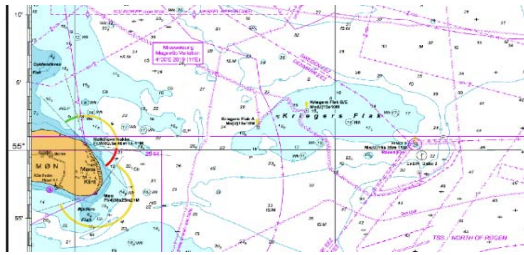
Update of information

Week 37

September 15 - 21, 2022

Next FOGA Info to be distributed, September 22, 2022

INFO 1.0



VATTENFALL

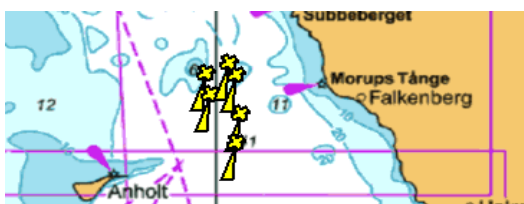
The offshore windfarm **Danish Kriegers Flak** is situated in the Danish part of the Baltic Sea. The Crew Transfer Vessels (CTV) **TRAVELLER** and **BOLDER** operate in the Kriegers Flak area.

Vattenfall OCC Marine Coordination Centre is in operation 24/7 and can be contacted via duty-phone no.: +45 32 240 243.

Vattenfall OCC (MCC) is monitoring the traffic in the area of all Vattenfall OWF.



INFO 1.1



Station	Lat	Long
KS1	56,85243	11,93293
KS2	56,8498	12,03168
KS3	56,80908	11,94408
KS4	56,76895	12,04957
KS5	56,7102	12,03213

Vattenfall have deployed a wave buoy as well as a guard buoy in Kattegat, were the Kattegat Syd Wind Farm is planned. The buoys are deployed at below mentioned positions:

Wave buoy:

KAYD 56° 52 .415'N - 12° 00.458'E

Guard buoy:

KAYD 56° 52 .490'N - 12° 00.600'E

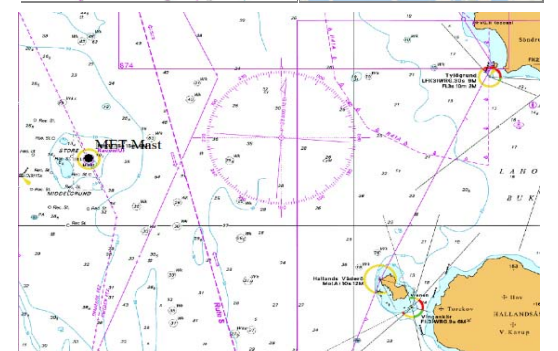
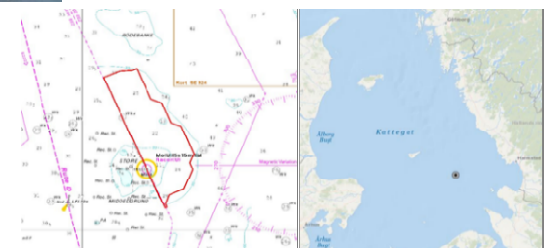
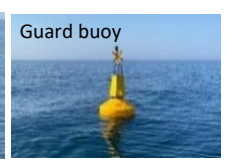
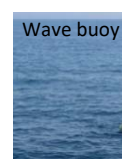
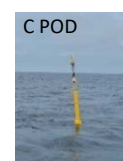
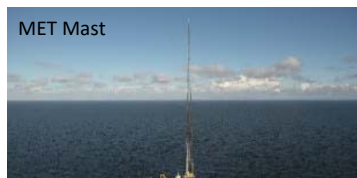
Both buoys has a yellow light with 5 flashes every 20 sec. with a range of 3 NM: FI(5) Y 20s

Mariners are requested to keep clear of the buoys.

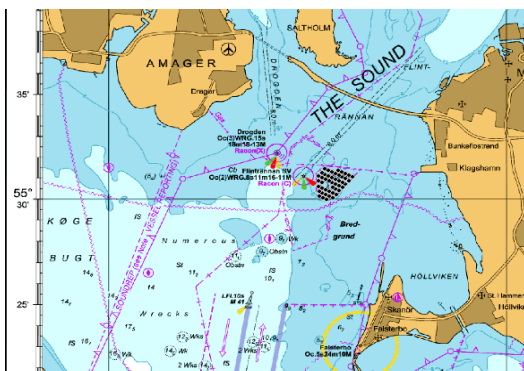
C-POD stations: On the below mentioned positions Vattenfall have 5 C-POD stations deployed (KS1-KS5) marked with yellow buoys.

Store Middelgrund - MET Mast

On the position: 56°33.7N - 012°06.3E a MET mast is situated on a platform 7 m above mean sea level. The complete height of both mast and platform is approx. 120 m above mean sea level. The construction can be seen at the photo.

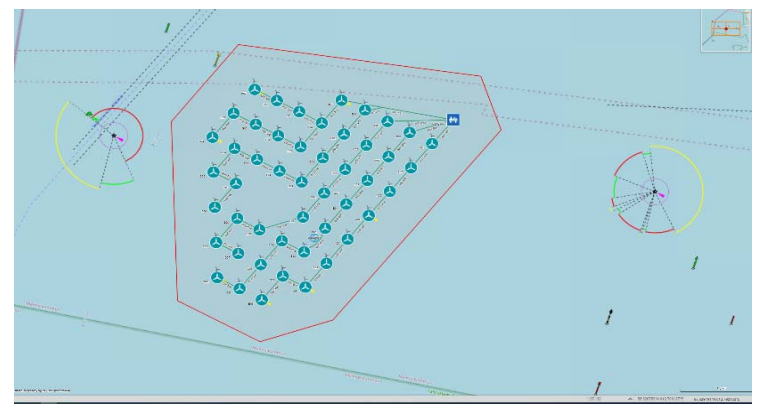


INFO 1.2



The offshore windfarm **Lillgrund** is located approx. 10 km off the coast of Southern Sweden, just South of the Öresund Bridge.

The Crew Transfer Vessel (CTV) **BRINGER** operates in the Lillgrund area.



Vattenfall OCC Marine Coordination Centre is in operation 24/7 and can be contacted via duty-phone no.: +45 32 240 243.

Vattenfall OCC (MCC) is monitoring the traffic in the area of all Vattenfall OWF.

INFO 2.0

Vessel positions:

The vessel **ARNE TISELIUS** will do environmental survey in the Baltic Sea.

The vessel **SØLØVEN** will do environmental survey in the Baltic Sea.





FOGA ApS
FISHERMENS
INFORMATION
ON OFFSHORE
ACTIVITIES

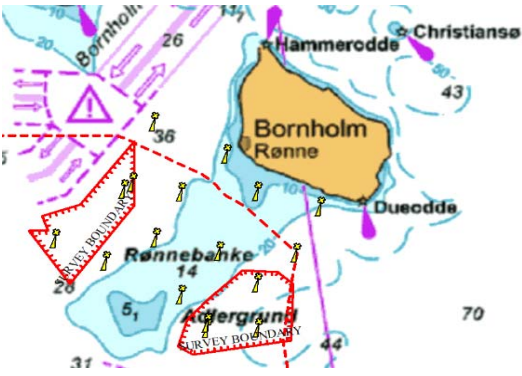
Trafikhavnsvej 19
DK-6700 Esbjerg
Tel.: +45 75 45 11 44
E-Mail: fish.info@foga.dk
Web page: www.foga.dk

BALTIC SEA ACTIVITIES

Update of information
Week 37
September 15 - 21, 2022
Next FOGA Info to be distributed, September 22, 2022

FOGA ApS has on basis of information received from offshore operators at the Baltic Sea prepared the following newsletter describing present activities:

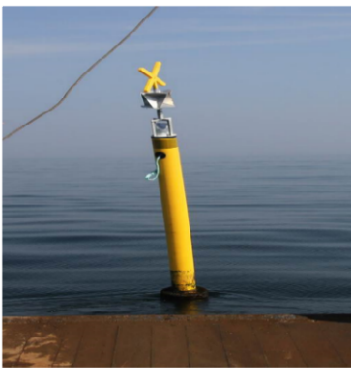
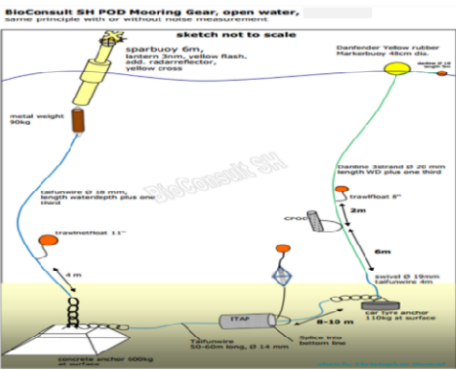
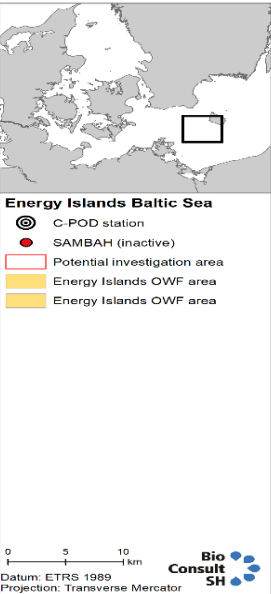
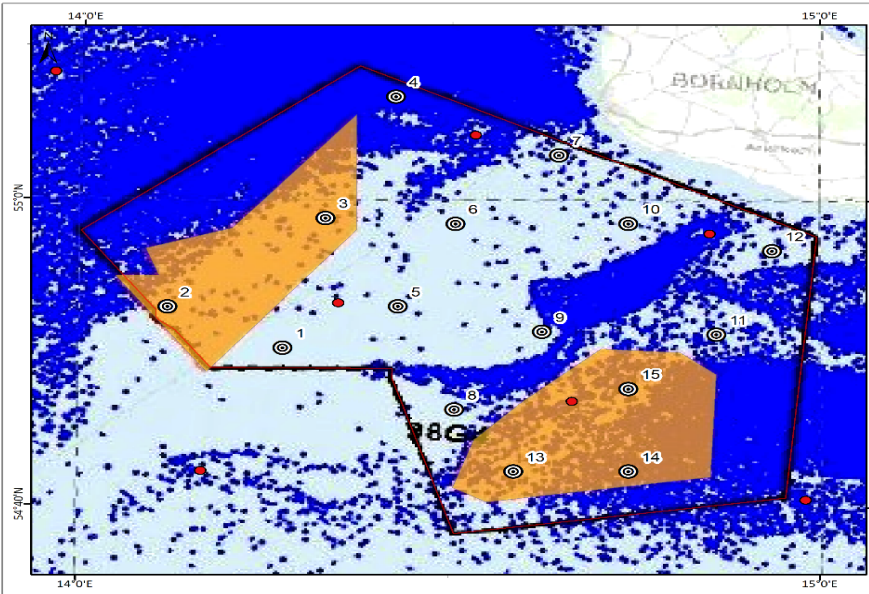
INFO 3.0



Gardline Limited are conducting a geotechnical site investigation at the Bornholm 1 & 2 offshore wind farms on behalf of Energinet. The work is being conducted by the DP2 drill vessels **KOMMANDOR SUSAN** (IMO 9177844) and **OCEAN VANTAGE** (IMO 8405440). Operations currently being undertaken are a series of geotechnical boreholes in the Bornholm 1 and Bornholm 2 areas, see work site below. The nature of this geotechnical investigation means that whilst the vessels are operational on each location they cannot move as they will have equipment deployed to the seabed.

During the coming year Energinet will be carrying out metrological and oceanographic measurements Southwest and West of Bornholm, where offshore windfarms are to be located.

Energinet has deployed 15 C-POD stations in the area around the two designated areas for the two new wind farm areas approx. 20 km Southwest and South of Rønne. The C-POD stations have been selected to cover the entire area, so that it can be investigated how the marine mammals use the area. The C-POD stations will be in operation for 24 months to cover all seasons and variations between years. The stations will be serviced mid-season to guarantee one month of data per season. The stations and the individual C-PODS are equipped with GPS locating equipment so that they can be located in the event of their disappearance.



Description	Longitude	Latitude
LiDAR buoy 3	14°21.34' E	54°59.69' N
LiDAR buoy 4	14°35.29' E	54°43.02' N
Salinity and temperature string	14°35.24' E	54°42.97' N

Station	(WGS 84, DD°MM)	(WGS 84, DD°MM)	(WGS 84, DD)	(WGS 84, DD)
1	54° 50.34' N	14° 16.46' E	54,8390118	14,2743266
2	54° 52.97' N	14° 07.06' E	54,8829094	14,1176595
3	54° 58.82' N	14° 19.80' E	54,9804015	14,3300611
4	55° 06.77' N	14° 25.42' E	55,1128945	14,4236763
5	54° 53.09' N	14° 25.76' E	54,8847734	14,4293883
6	54° 58.50' N	14° 30.37' E	54,9749764	14,5062260
7	55° 02.99' N	14° 38.76' E	55,0498894	14,6459452
8	54° 46.37' N	14° 30.42' E	54,7727805	14,5070071
9	54° 51.47' N	14° 37.47' E	54,8577788	14,6244922
10	54° 58.54' N	14° 44.43' E	54,9757019	14,7405676
11	54° 51.32' N	14° 51.62' E	54,8553234	14,8602665
12	54° 56.77' N	14° 56.13' E	54,9461062	14,9355779
13	54° 42.34' N	14° 35.23' E	54,7056757	14,5871000
14	54° 42.37' N	14° 44.54' E	54,7061050	14,7422912
15	54° 47.76' N	14° 44.50' E	54,7959720	14,7417198



FOGA ApS
FISHERMENS
INFORMATION
ON OFFSHORE
ACTIVITIES

Trafikhavnskaj 19
DK-6700 Esbjerg
Tel.: +45 75 45 11 44
E-Mail: fish.info@foga.dk
Web page: www.foga.dk

BALTIC SEA ACTIVITIES

Update of information
Week 37
September 15 - 21, 2022
Next FOGA Info to be distributed, September 22, 2022

FOGA ApS has on basis of information received from offshore operators at the Baltic Sea prepared the following newsletter describing present activities:

INFO 4.0

VTS Fehmarnbelt area:

- 1)54° 45.20'N - 011° 02.10'E coast
- 2)54° 36.50'N - 010° 53.10'E VTS W
- 3)54° 33.70'N - 010° 53.50'E VTS SW
- 4)54° 31.65'N - 011° 03.40'E coast
- 5)54° 24.00'N - 011° 18.65'E coast
- 6)54° 24.00'N - 011° 41.60'E VTS SE
- 7)54° 31.90'N - 011° 41.60'E VTS E
- 8)54° 35.70'N - 011° 30.25'E coast



The tunnel trench will be dredged by a number of different dredging vessels (see below) working inside designated work areas situated along the tunnel alignment.

The designated work areas are marked with buoys with AIS, and the work areas will move along the tunnel alignment as the dredging of the tunnel trench progresses.

At the coast of Lolland, a new work harbour is constructed just east of the current harbour in Rødbyhavn and there have been established light at the buoys and at the breakwater. A western and an eastern mooring area, respectively, are also marked by buoys. In these areas a variety of different tasks are conducted related to the construction of the work harbor and the reclamation areas on both sides of the two harbours. Both mooring areas are off-limits to non-construction vessels.

Next to the ferry harbor in Puttgarden a mooring- and working area have been established. The area is marked with yellow buoys. In this area a variety of different tasks are conducted related to the construction of a minor work harbor. The mooring- and working area is off-limit to non-construction vessels.

It is strongly recommended not to carry out trawl-fishing in the vicinity of the tunnel trench.

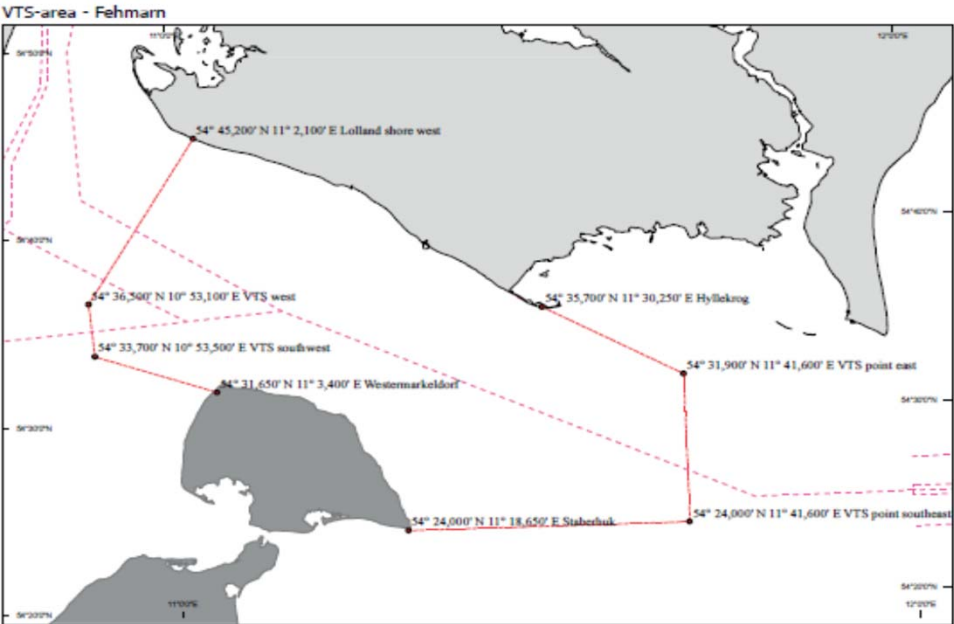
Central to ensuring the safety and efficiency of the ship traffic is the establishment and operation of a **Vessel Traffic Service (VTS Fehmarnbelt)**. VTS Fehmarnbelt covers the Fehmarnbelt area (see below figure) and will be in operation during the entire tunnel construction phase. VTS Fehmarnbelt is a common German and Danish VTS operated by the German and Danish authorities.

VTS working channel is VHF 68.

Each work area will be guarded by one guard vessel at all times. Representatives from the German authorities are onboard the guard vessels, and the guard vessels will be acting under the authority of the VTS operators.

A dedicated assistance tug (**BUGSIER 30**) will be available to assist a hampered or damaged vessel inside the VTS area at all times.

The assistance tug is free of charge, ensured and no salvage or assistance fees will be claimed.



New OWA-South 09.09.2022				
AIS buoys - Buoy Character: FL(2+1)Y.155				
Buoy Nr	Latitude	Longitude	Chainage	Offset
S1	4°30.7277'	11°14.6045'	12080	-280
S2	4°30.6432'	11°15.1721'	12280	320
S3	4°30.9075'	11°14.8026'	12479	-280
S4	4°30.7343'	11°15.2720'	12479	320
S5	4°31.1044'	11°15.0146'	12913	-280
S6	4°30.9341'	11°15.1548'	12913	320
S7	4°31.2947'	11°15.2148'	13330	-280
S8	4°31.1274'	11°15.6905'	13330	320

New OWA-North 10.09.2022				
AIS buoys - Buoy Character: FL(3)Y.105				
Buoy Nr	Latitude	Longitude	Chainage	Offset
N1	4°33.7139'	11°17.4004'	18430	-280
N2	4°33.5745'	11°17.9025'	18430	320
N3	4°33.3574'	11°17.1073'	17697	-280
N4	4°33.2180'	11°17.6093'	17697	320
N5	4°33.5359'	11°17.2541'	18064	-280
N6	4°33.3965'	11°17.7561'	18064	320
N7	4°33.1790'	11°16.9606'	17330	-280
N8	4°33.0395'	11°17.4646'	17330	320

This newsletter and infochart has been prepared on request from the operators in the Baltic Sea/Inner Danish waters and is distributed via E-mail to all fishing vessels and interested parties around the Baltic Sea. Please also visit FOGA's website www.foga.dk. E-mail fish.info@foga.dk to subscribe or unsubscribe. Please also notice that the size of the newsletter as a pdf file is approx. 1 mb.