



FOGA ApS
FISHERMENS
INFORMATION
ON OFFSHORE
ACTIVITIES

Trafikhavnsvej 19
DK-6700 Esbjerg
Tel.: +45 75 45 11 44
E-Mail: fish.info@foga.dk
Web page: www.foga.dk

BALTIC SEA ACTIVITIES

Week 13
March 27, 2024

FOGA ApS has on basis of information received from offshore operators in the Baltic Sea prepared the following newsletter describing present activities:





FOGA ApS
FISHERMENS
INFORMATION
ON OFFSHORE
ACTIVITIES

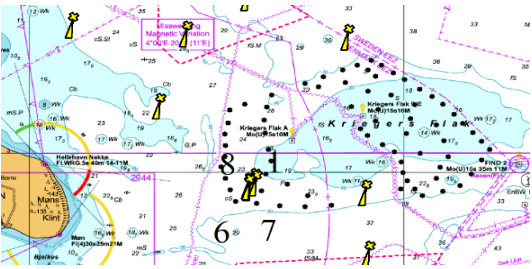
Trafikhavnskej 19
DK-6700 Esbjerg
Tel.: +45 75 45 11 44
E-Mail: fish.info@foga.dk
Web page: www.foga.dk

BALTIC SEA ACTIVITIES

Update of information
Week 13
March 27 - April 03, 2024
Next FOGA Info to be distributed, April 04, 2024

FOGA ApS has on basis of information received from offshore operators at the Baltic Sea prepared the following newsletter describing present activities:

INFO 1.0



VATTENFALL

The offshore windfarm **Danish Kriegers Flak** is situated in the Danish part of the Baltic Sea.
The Crew Transfer Vessels (CTV) **TRAVELLER**, **ATTENDER** and **BOLDER** operates in the Kriegers Flak area.
The Jack-up vessel **WIND ENTERPRISE** operates in Kriegers Flak East.
The survey vessel **HBC ACHIEVER** will start ROV operations at Kriegers Flak next week.

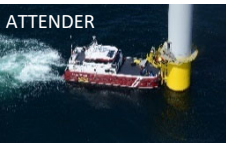
Vattenfall OCC Marine Coordination Centre is in operation 24/7 and can be contacted by VHF CH 16 and 10, as well MCC can be contacted via duty-phone no.: +45 32 240 243.
Vattenfall OCC (MCC) is monitoring the traffic in the area of all Vattenfall OWF.

Within the windfarm a seaweed farm has been established. The site is marked by 4 yellow buoys. The lines and buoys are in the surface in the seaweed farm at Danish Kriegers Flak and navigation within the marked area should be avoided.

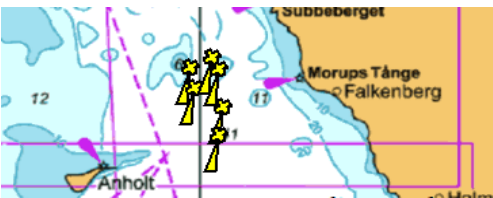
- 1, 54°58.89473502'N, 012°47.69797624'E
6, 54°58.54310618'N, 012°47.36581880'E
7, 54°58.64355668'N, 012°47.20962837'E
8, 54°58.79427409'N, 012°47.85416315'E

The **cable is surrounded by a protection zone of 200m** on each side of the cable pursuant to Danish Maritime Authority Order no. 939 of 27 November 1992 on Protection of Submarine Cables and Pipelines. Within the protection zone anchoring, dredging, boulder removal, and any use of equipment being dragged across the seabed will be prohibited.

A buoy, with equipment for mussel spat collection in the water column, has been deployed.
The buoy is deployed at the following position: 54.58.601'N – 12.47.286'E



INFO 1.1



Vattenfall have deployed a wave buoy as well as a guard buoy in Kattegat, were the Kattegat Syd Wind Farm is planned. The buoys are deployed at below mentioned positions:

Wave bouy:
KAYD 56° 52 .415'N - 12° 00.458'E
Guard buoy:
KAYD 56° 52 .490'N - 12° 00.600'E
Both buoys has a yellow light with 5 flashes every 20 sec. with a range of 3 NM: Fl(5) Y 20s



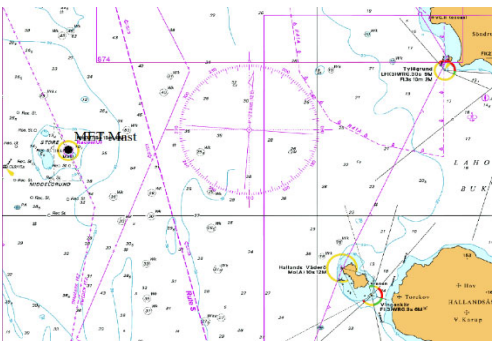
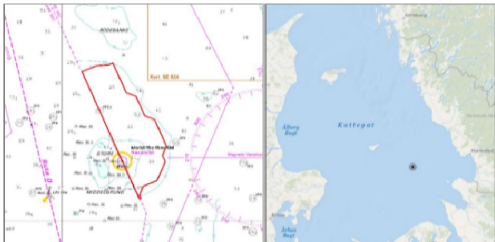
Station	Lat	Long
KS1	56,85243	11,93293
KS2	56,8498	12,03168
KS3	56,80908	11,94408
KS4	56,76895	12,04957
KS5	56,7102	12,03213

Mariners are requested to keep clear of the buoys.

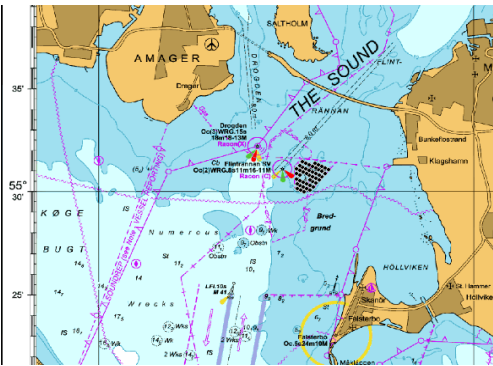
C-POD stations: On the below mentioned positions Vattenfall have 5 C-POD stations deployed (KS1-KS5) marked with yellow buoys.

Store Middelgrund - MET Mast

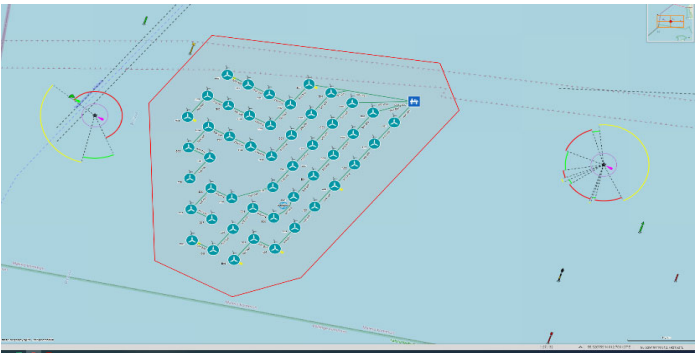
The navigation light of the **MET Mast** is out of service. On the position: 56°33.7N - 012°06.3E a MET mast is situated on a platform 7 m above mean sea level. The complete height of both mast and platform is approx. 120 m above mean sea level. The construction can be seen at the photo.



INFO 1.2



The offshore windfarm **Lillgrund** is located approx. 10 km off the coast of Southern Sweden, just South of the Öresund Bridge.
The Crew Transfer Vessel (CTV) **BRINGER** operates in the Lillgrund area.



Vattenfall OCC Marine Coordination Centre is in operation 24/7 and can be contacted by VHF CH 16 and 10, as well MCC can be contacted via duty-phone no.: +45 32 240 243.

Vattenfall OCC (MCC) is monitoring the traffic in the area of all Vattenfall OWF.

INFO 2.0

Vessel positions:

The vessel **ARNE TISELIUS** is conducting environmental surveys in the Baltic Sea.
The vessel **FORTUNA KINGFISHER** is conducting environmental surveys in the Baltic Sea.
The vessel **FORTUNA PUFFIN** is conducting environmental surveys in the Baltic Sea.
The vessel **SØLØVEN** is conducting environmental surveys in the Baltic Sea.
The vessel **HYDROGRAF** is conducting environmental surveys in the Baltic Sea.
The vessel **VERA II** is acting as guard vessel in the Baltic Sea.





FOGA ApS
FISHERMENS
INFORMATION
ON OFFSHORE
ACTIVITIES

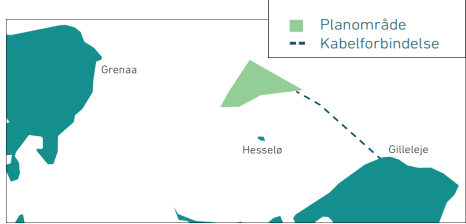
Trafikhavnsvej 19
DK-6700 Esbjerg
Tel.: +45 75 45 11 44
E-Mail: fish.info@foga.dk
Web page: www.foga.dk

BALTIC SEA ACTIVITIES

Update of information
Week 13
March 27 - April 03, 2024
Next FOGA Info to be distributed, April 04, 2024

FOGA ApS has on basis of information received from offshore operators at the Baltic Sea prepared the following newsletter describing present activities:

INFO 3.0



ENERGINET
Eltransmission

Hesselø

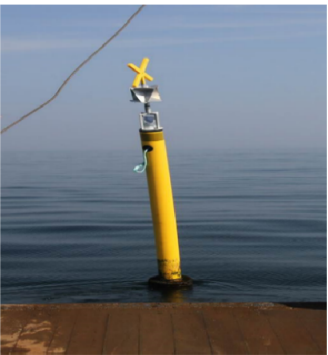
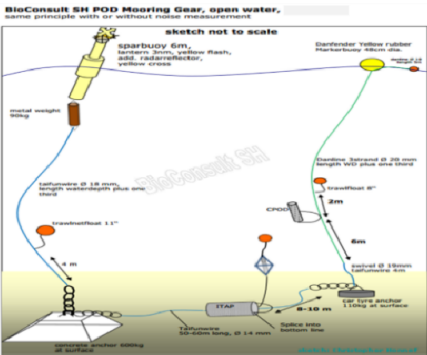
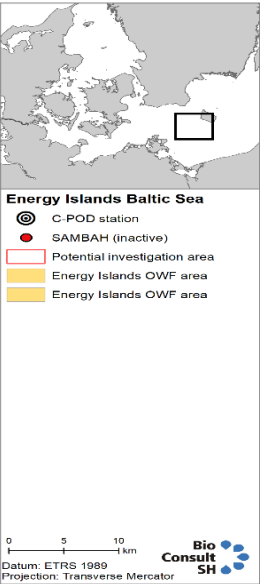
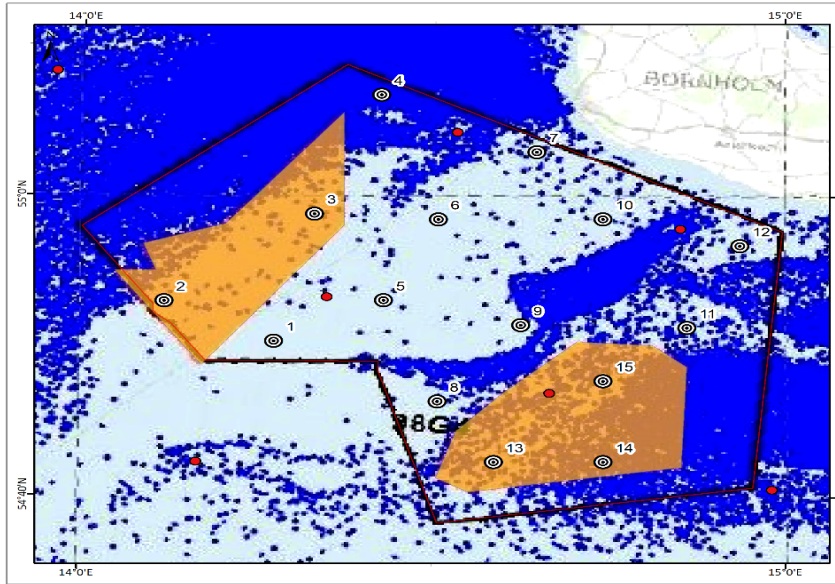
The Danish Energy Agency (DEA) invite you to meeting about the Hesselø Offshore Wind Farm and the associated environmental report. The meeting take place on Tuesday March 19th between 16-19 hrs. Kulturhavn Gilleleje - Peter Fjelstrups vej12, 3250 Gilleleje . More info available on the DEA Homepage www.ens.dk/hesselø-havvind

Bornholm

During the coming year Energinet will be carrying out metrological and oceanographic measurements Southwest and West of Bornholm, where offshore windfarms are to be located.



Energinet has deployed 15 C-POD stations in the area around the two designated areas for the two new wind farm areas approx. 20 km Southwest and South of Rønne. The C-POD stations have been selected to cover the entire area, so that it can be investigated how the marine mammals use the area. The C-POD stations will be in operation for 24 months to cover all seasons and variations between years. The stations will be serviced mid-season to guarantee one month of data per season. The stations and the individual C-PODS are equipped with GPS locating equipment so that they can be located in the event of their disappearance.

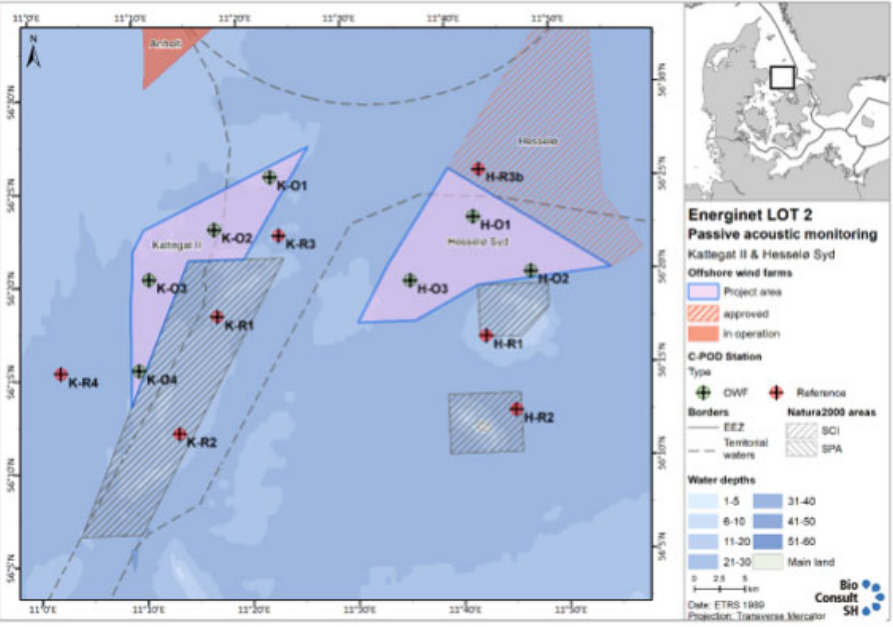
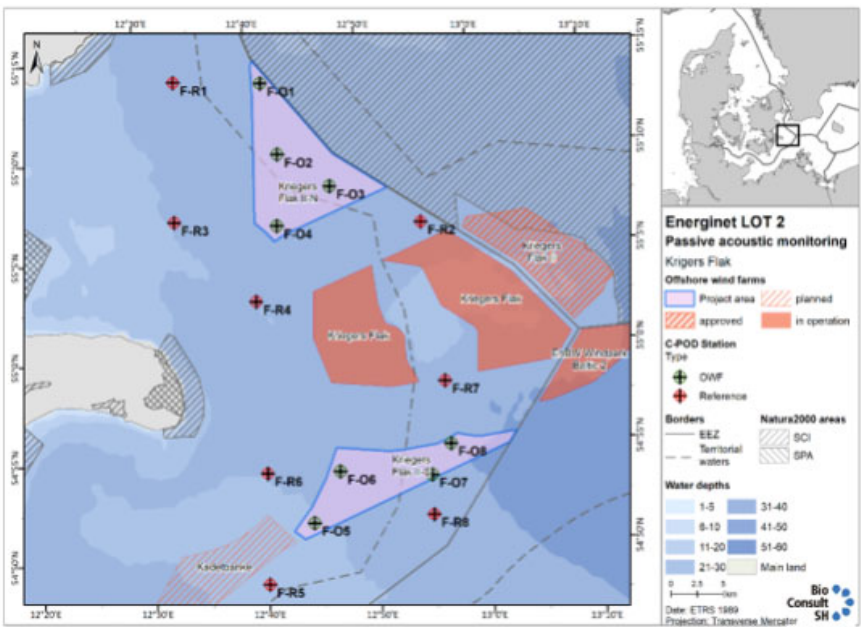


Description	Longitude	Latitude
LiDAR buoy 3	14°21.34' E	54°59.69' N
LiDAR buoy 4	14°35.29' E	54°43.02' N
Salinity and temperature string	14°35.24' E	54°42.97' N

Station	(WGS 84, DD°MM)	(WGS 84, DD°MM)	(WGS 84, DD)	(WGS 84, DD)
1	54° 50.34' N	14° 16.46' E	54,8390118	14,2743266
2	54° 52.97' N	14° 07.06' E	54,8829094	14,1176595
3	54° 58.82' N	14° 19.80' E	54,9804015	14,3300611
4	55° 06.77' N	14° 25.42' E	55,1128945	14,4236763
5	54° 53.09' N	14° 25.76' E	54,8847734	14,4293883
6	54° 58.50' N	14° 30.37' E	54,9749764	14,5062260
7	55° 02.99' N	14° 38.76' E	55,0498894	14,6459452
8	54° 46.37' N	14° 30.42' E	54,7727805	14,5070071
9	54° 51.47' N	14° 37.47' E	54,8577788	14,6244922
10	54° 58.54' N	14° 44.43' E	54,9757019	14,7405676
11	54° 51.32' N	14° 51.62' E	54,8553234	14,8602665
12	54° 56.77' N	14° 56.13' E	54,9461062	14,9355779
13	54° 42.34' N	14° 35.23' E	54,7056757	14,5871000
14	54° 42.37' N	14° 44.54' E	54,7061050	14,7422912
15	54° 47.76' N	14° 44.50' E	54,7959720	14,7417198

1: Kattegat II 56°27.182'N, 011°26.513'E	2: Hesselø Syd 56°25.711'N, 011°39.922'E	3: Krigers Flak II Nord 55°14.829'N, 12°40.754'E	4: Krigers Flak II Syd 54°55.018'N, 13°02.111'E
56°22.647'N, 011°09.375'E	56°20.157'N, 011°55.063'E	55°08.123'N, 12°52.360'E	54°50.715'N, 12°43.424'E
56°13.298'N, 011°08.839'E	56°17.609'N, 011°36.317'E	55°05.714'N, 12°42.013'E	54°53.725'N, 12°45.553'E
56°21.118'N, 011°20.251'E	56°17.666'N, 011°30.117'E	55°06.685'N, 12°40.304'E	54°55.326'N, 12°56.524'E

Energinet has deployed a number of CPOD stations in the areas 1 - 4.





FOGA ApS
FISHERMENS
INFORMATION
ON OFFSHORE
ACTIVITIES

Trafikhavnskaj 19
DK-6700 Esbjerg
Tel.: +45 75 45 11 44
E-Mail: fish.info@foga.dk
Web page: www.foga.dk

BALTIC SEA ACTIVITIES

Update of information
Week 13
March 27 - April 03, 2024
Next FOGA Info to be distributed, April 04, 2024

FOGA ApS has on basis of information received from offshore operators at the Baltic Sea prepared the following newsletter describing present activities:

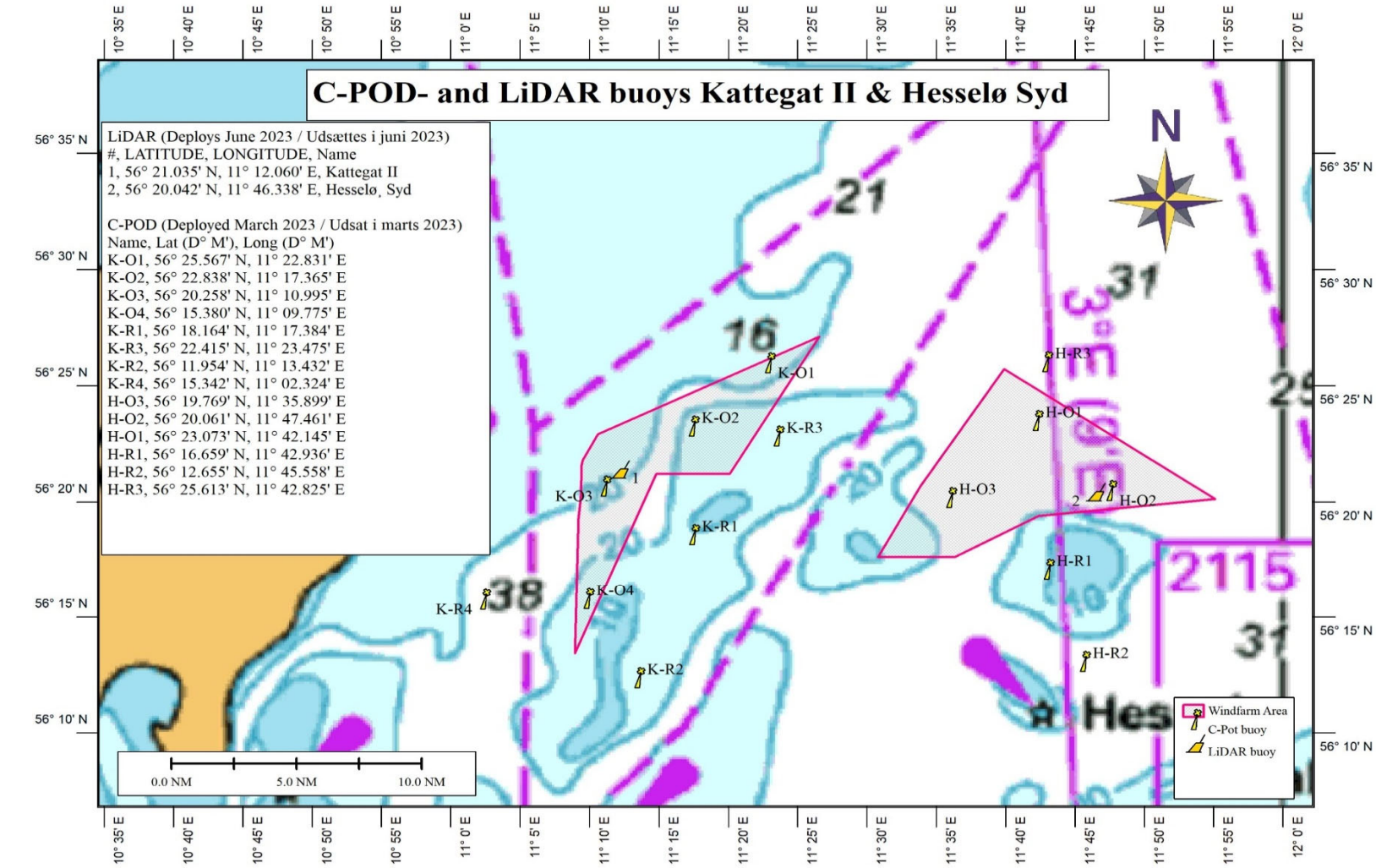
On behalf of Energinet 2 buoys have been deployed with a light a and yellow topmarking.

Station	Breddegrad	Længdegrad	Vanddybde
	[°N]	[°E]	
Kattegat II	56° 21,0348'	11° 12,0594'	20,8m
KGI-1-LB	56,35058°	11,20099°	
Hesselø Syd	56° 20,0412'	11° 46,3374'	22,6m
HS-1-LB	56,33402°	11,77229°	

The below mentioned lists shows the positions for the C-POD stations deployed in the area 1 - 4:

Typ	Name	Area	Lat (D°)	Long (D°)	Lat (D° M')	Long (D° M')
OWF	K-O1	Kattegat2	56,42612	11,380518	56° 25.567' N, 11° 22.831' E	
OWF	K-O2	Kattegat2	56,38063	11,289414	56° 22.838' N, 11° 17.365' E	
OWF	K-O3	Kattegat2	56,33763	11,18325	56° 20.258' N, 11° 10.995' E	
OWF	K-O4	Kattegat2	56,25634	11,162913	56° 15.380' N, 11° 09.775' E	
Reference	K-R1	Kattegat2	56,30273	11,289738	56° 18.164' N, 11° 17.384' E	
Reference	K-R3	Kattegat2	56,37358	11,391245	56° 22.415' N, 11° 23.475' E	
Reference	K-R2	Kattegat2	56,19923	11,223871	56° 11.954' N, 11° 13.432' E	
Reference	K-R4	Kattegat2	56,25571	11,038729	56° 15.342' N, 11° 02.324' E	
OWF	H-O3	Hesselø Syd	56,32948	11,598312	56° 19.769' N, 11° 35.899' E	
OWF	H-O2	Hesselø Syd	56,33435	11,791024	56° 20.061' N, 11° 47.461' E	
OWF	H-O1	Hesselø Syd	56,38455	11,702416	56° 23.073' N, 11° 42.145' E	
Reference	H-R1	Hesselø Syd	56,27766	11,715596	56° 16.659' N, 11° 42.936' E	
Reference	H-R2	Hesselø Syd	56,21092	11,759293	56° 12.655' N, 11° 45.558' E	
Reference	H-R3	Hesselø Syd	56,42688	11,713746	56° 25.613' N, 11° 42.825' E	

Typ	Name	Area	Lat (D°)	Long (D°)	Lat (D° M')	Long (D° M')
OWF	F-O1	Kriegers Flak II - N	55,22768	12,690192	55° 13.661' N, 12° 41.412' E	
OWF	F-O4	Kriegers Flak II - N	55,10812	12,704763	55° 06.487' N, 12° 42.286' E	
OWF	F-O3	Kriegers Flak II - N	55,13894	12,786561	55° 08.336' N, 12° 47.194' E	
OWF	F-O2	Kriegers Flak II - N	55,16774	12,710919	55° 10.065' N, 12° 42.655' E	
Reference	F-R2	Kriegers Flak II - N	55,10518	12,920309	55° 06.311' N, 12° 55.219' E	
Reference	F-R3	Kriegers Flak II - N	55,11517	12,551529	55° 06.910' N, 12° 33.092' E	
Reference	F-R1	Kriegers Flak II - N	55,23206	12,559632	55° 13.924' N, 12° 33.578' E	
Reference	F-R4	Kriegers Flak II - N	55,04585	12,668195	55° 02.751' N, 12° 40.092' E	
OWF	F-O5	Kriegers Flak II - S	54,85853	12,738946	54° 51.512' N, 12° 44.337' E	
OWF	F-O8	Kriegers Flak II - S	54,91879	12,948089	54° 55.127' N, 12° 56.885' E	
OWF	F-O7	Kriegers Flak II - S	54,89352	12,917329	54° 53.611' N, 12° 55.040' E	
OWF	F-O6	Kriegers Flak II - S	54,90039	12,780795	54° 54.023' N, 12° 46.848' E	
Reference	F-R6	Kriegers Flak II - S	54,90191	12,672705	54° 54.114' N, 12° 40.362' E	
Reference	F-R8	Kriegers Flak II - S	54,8603	12,917251	54° 50.786' N, 12° 55.965' E	
Reference	F-R7	Kriegers Flak II - S	54,97153	12,943873	54° 58.292' N, 12° 56.632' E	
Reference	F-R5	Kriegers Flak II - S	54,809	12,667616	54° 48.540' N, 12° 40.057' E	



INFO 4.0

Denmark. The Baltic Sea. Bornholm NE. Gas leak. Restricted area.

Details **Until further notice**, due to obstructions on the seabed in connection with damage of the gas pipeline, a **restricted area** has been established within a distance of 1nm from positions 1) and 2). Anchoring, fishing and working on the seabed is not recommended in the area.

- 1) 55° 32.117'N - 015° 42.169'E
- 2) 55° 32.017'N - 015° 41.959'E

Denmark. The Baltic Sea. Bornholm SE. Gas leak. Restricted area.

Details **Until further notice**, due to obstructions on the seabed in connection with damage of the gas pipeline, a **restricted area** has been established within a distance of 1nm from positions 1) and 2). Anchoring, fishing and working on the seabed is not recommended in the area.

- 1) 54° 52.623'N - 015° 24.529'E